

J:COM

Oita Cable Telecom

Content Introduction

We are a cable TV station in Oita, Japan.
We produce content about
nature, culture and food.

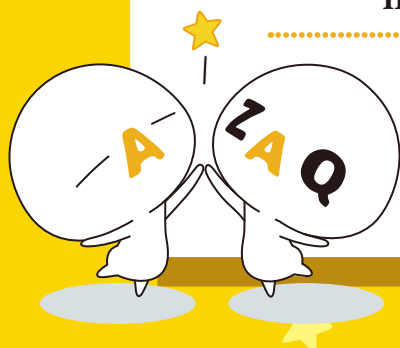
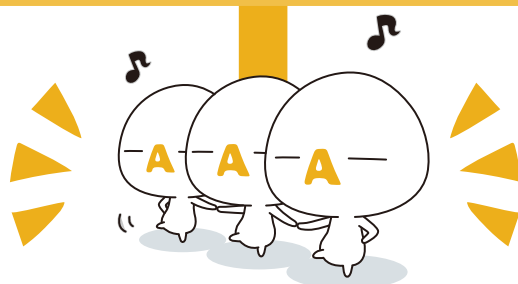
For this forum, we have produced a program
introducing the history behind a 1300 year old temple
and a bicycle trip around sightseeing areas.

We are looking for people not only interested in the
buying and selling of programs,
but also the exchange of content and information
including how Japanese programs are made.

Please let us know if this interests you.



©J:COM



Tomochari



“Tomochari” is a show in 4K, a bicycle trip around Oita Prefecture which highlights the attractions of the prefecture. Oita Prefecture has abundant nature with beautiful sea and mountains.



The program will feature this natural beauty and delicious food and special products. Along with the bicycle, the program will show the splendor of Oita Prefecture by focusing on the beautiful scenery of the four seasons, the traditions, and experiences you can only have in Oita Prefecture. Each program is 20 minutes in length and we currently have 20 programs.



Carved 1300 years of Rokugo Manzan, Usa Region, Kunisaki Peninsula

The Usa Region of Kunisaki Peninsula has 1300 years of history at a place of many temples and shrines that are collectively known as Rokugo Manzan.

This program will show aerial views of the temples built on the unique landforms from a volcanic eruption in antiquity. Each temple is covered in 5 minutes of content for a total of 30 programs.

